



## Spacetherm-CBS Overview

Spacetherm-CBS is an encapsulated insulation strip system designed to be applied directly to structural elements, providing additional insulation specifically targeted to limit the effects of cold bridging.

Spacetherm-CBS can also be used in areas where traditional insulation cannot easily be incorporated due to installation practicalities or a lack of clearance to other elements. Larger strips can also be used to boost insulation values in localised areas where cold bridging is an issue (for example wall junctions or ribbed concrete panels).

Hot box testing conducted at Oak Ridge National Laboratories in the US has shown improvements in thermal efficiency of around 10% for timber frame structures, and up to 30% for steel frame (based on 6mm strip thickness), while also reducing the potential for cold spots and condensation on the internal surfaces of the structure.

The strips comprise encapsulated Spacetherm aerogel with either self-adhesive backing or fixing lugs, allowing simple and quick installation even in areas with limited or awkward access. The strips are typically 38 or 50mm wide (other sizes on request) and available in a variety of thicknesses and lengths to reduce or eliminate onsite cutting and wastage.

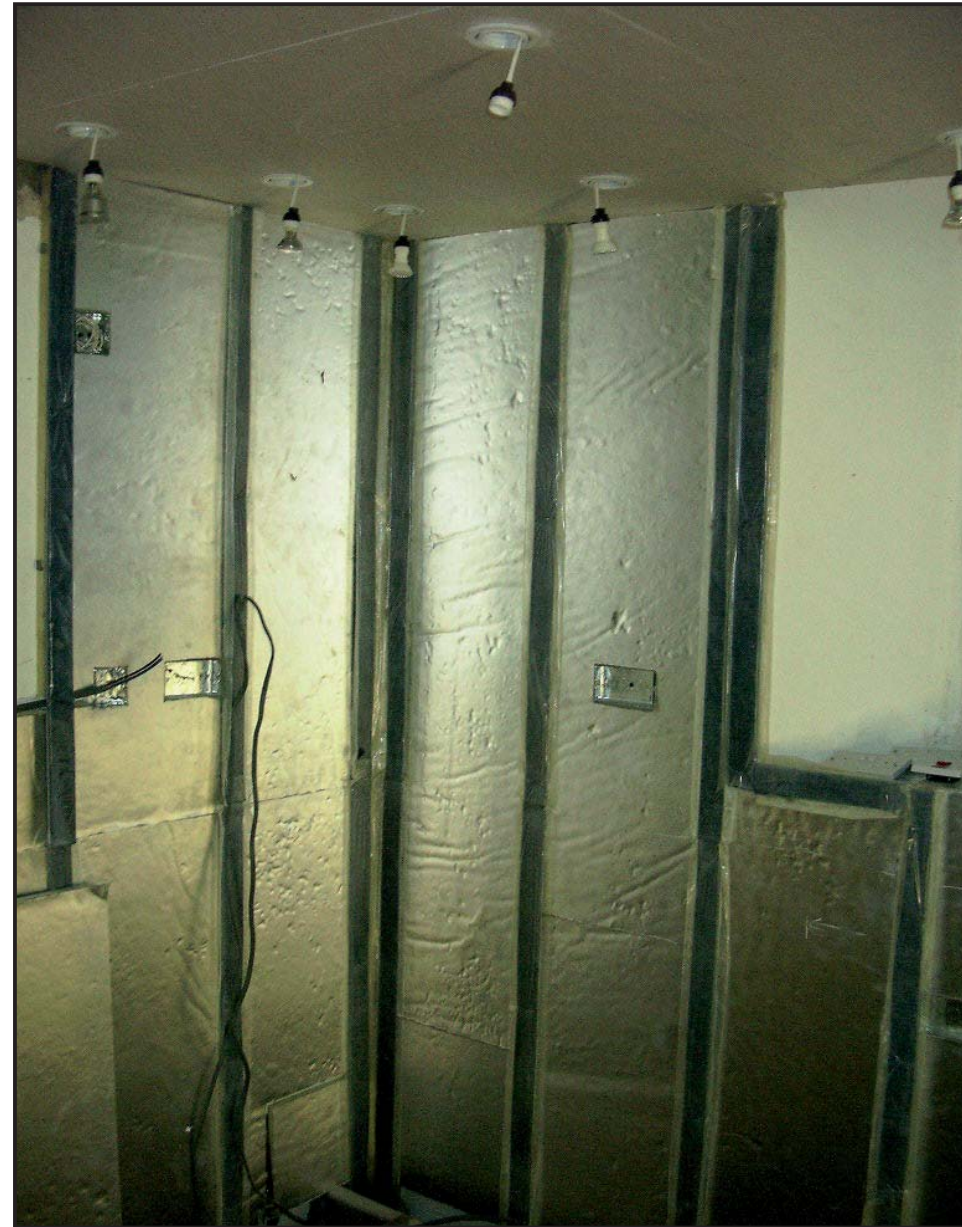
# INNOVATION BUILT ON EXPERIENCE

Spacetherm CBS has recently been used in the renovation and upgrade of part of an old Victorian school in Bovey Tracey as pictured right. The strips were attached to the internal timber studs prior to the installation of the plasterboard and have significantly reduced the potential for cold bridging.

The property is within the Community Power Network initiative based in Bovey Tracey which is part of the wider Climate Change Action programme centred in Bovey Tracey.

The aim of this initiative is to demonstrate that an individual town can by using latest technologies, including insulation and local power generation significantly and substantially reduce its carbon footprint.

For further information please contact the A Proctor Group Tel: 01250 872261 Fax: 01250 872727 email: askl@proctorgroup.com



**+44 (0) 1250 872 261**  
**www.proctorgroup.com**

Available online: NBS Specifications - BBA's - Technical Data - Fitting Instructions - Case Studies

METAL ROOFING  
CONSTRUCTION MEMBRANES  
THERMAL INSULATION  
GEOSYNTHETIC ENGINEERING  
ACOUSTIC INSULATION  
VIBRATION ISOLATION  
TIMBER CLADDING